

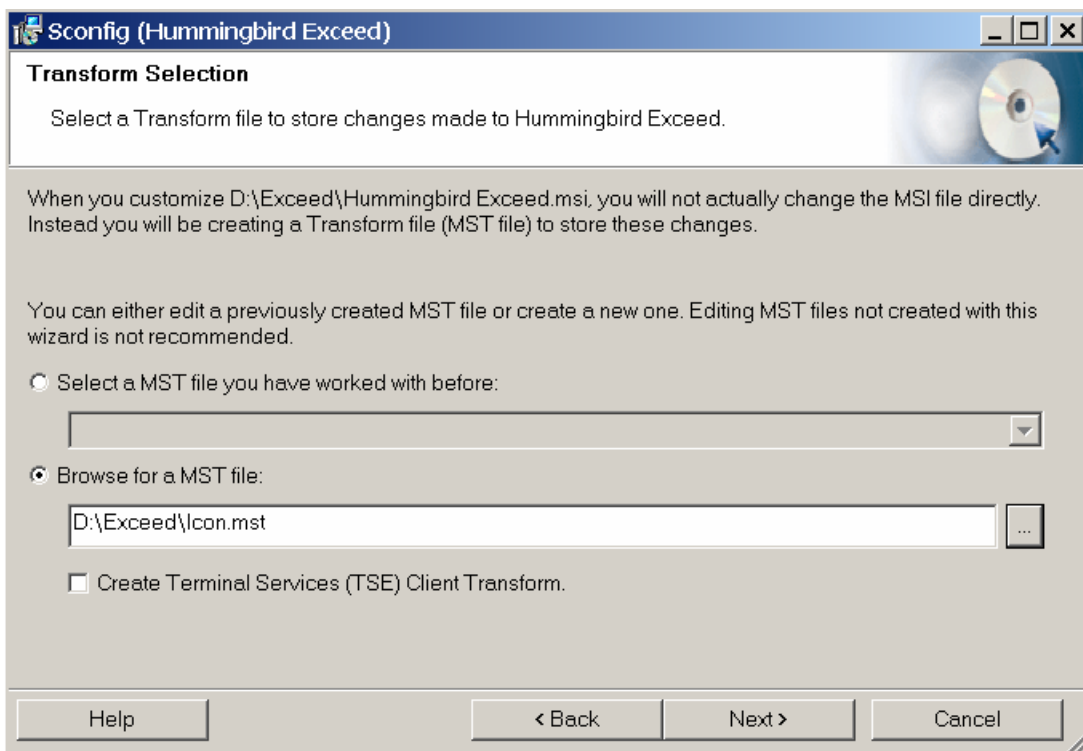
Customizing the installation using Sconfig to include HostExplorer 9.0 Profiles



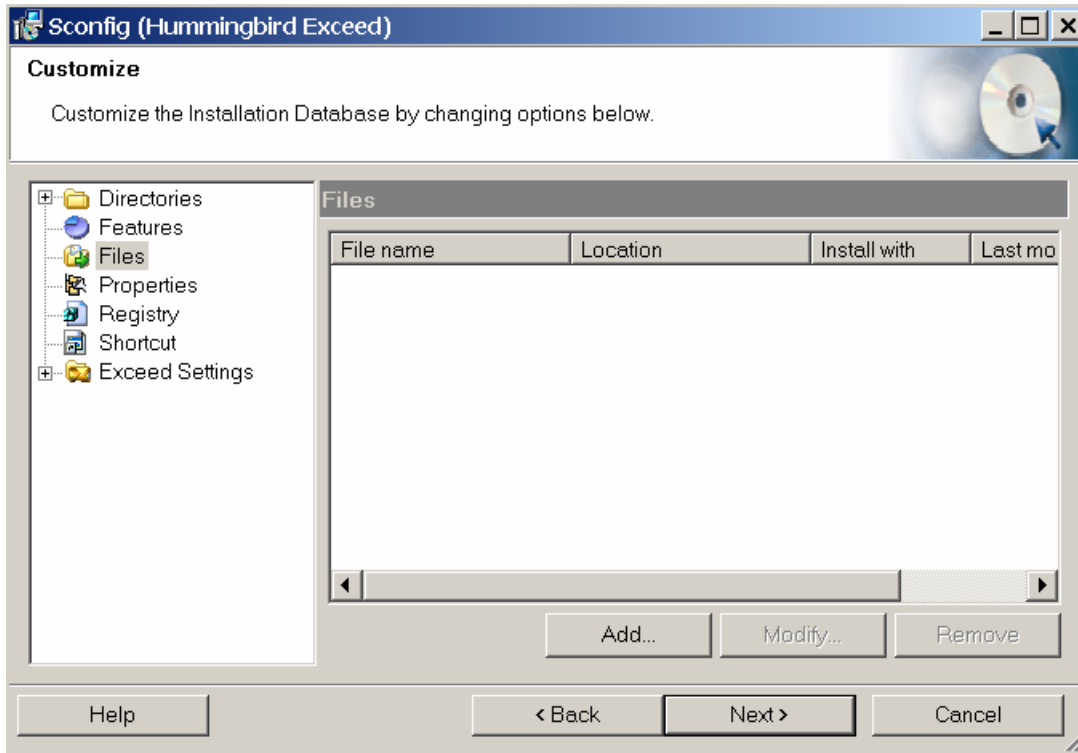
Hummingbird

As an Administrator you might want to customize the installation for other users, so that their installation would include one or more HostExplorer profiles (.hep file); in order to achieve that, you need to do the following:

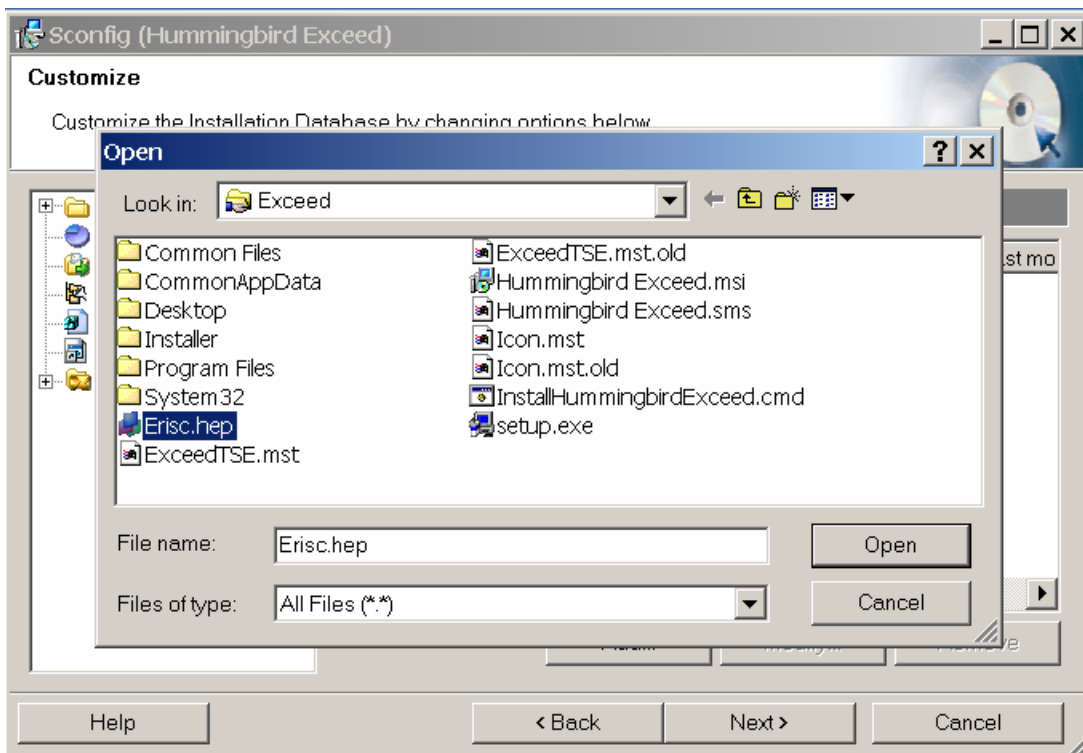
1. Create the profile(s) that you want your users to have using your currently installed product.
2. Run an administrative installation of the product that you want your users to install (e.g. Exceed); the administrative installation should be on a shared drive or some where on the network where other users can have access to it.
3. From your currently installed product, run Sconfig and browse for the .msi file under the administrative copy, click on "Next" and create a new .mst file, in the example below, the new .mst file is called Icon.mst:



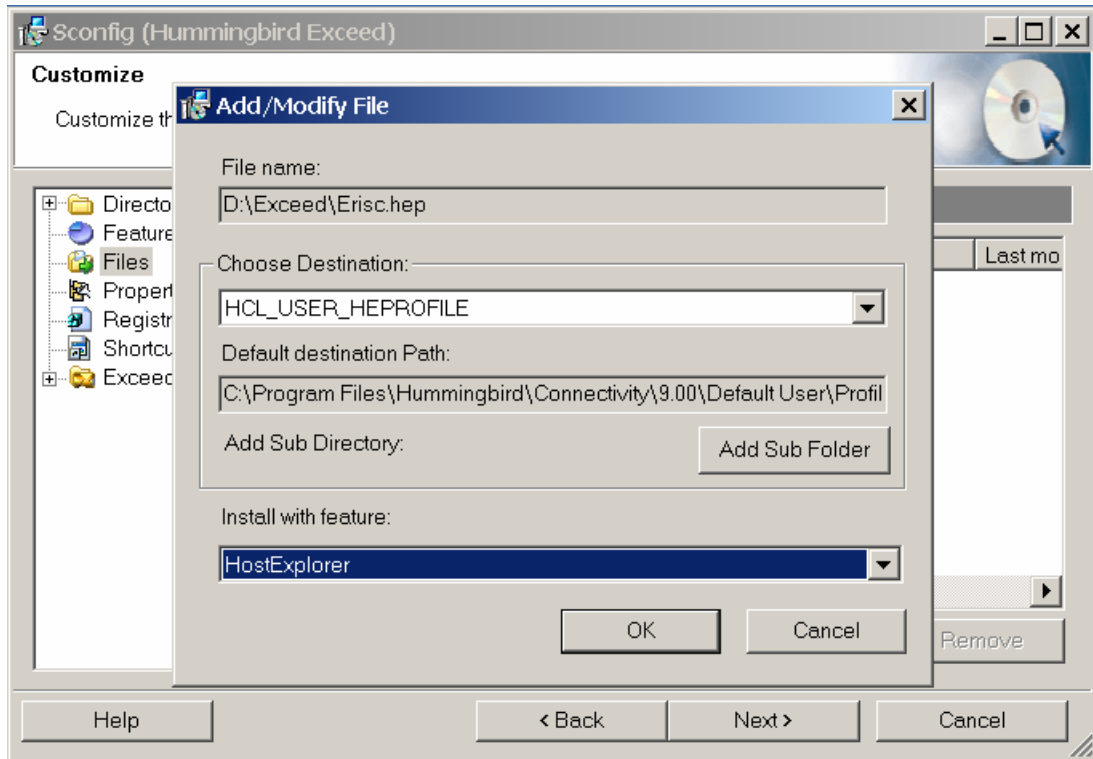
4. Click "Next" from the above screen, in the screen below you will be able to customize the installation for your users in many different ways such as, specifying the install directories, specifying what features to be installed...etc., for the purpose of this document, you need to select "Files" as shown below:



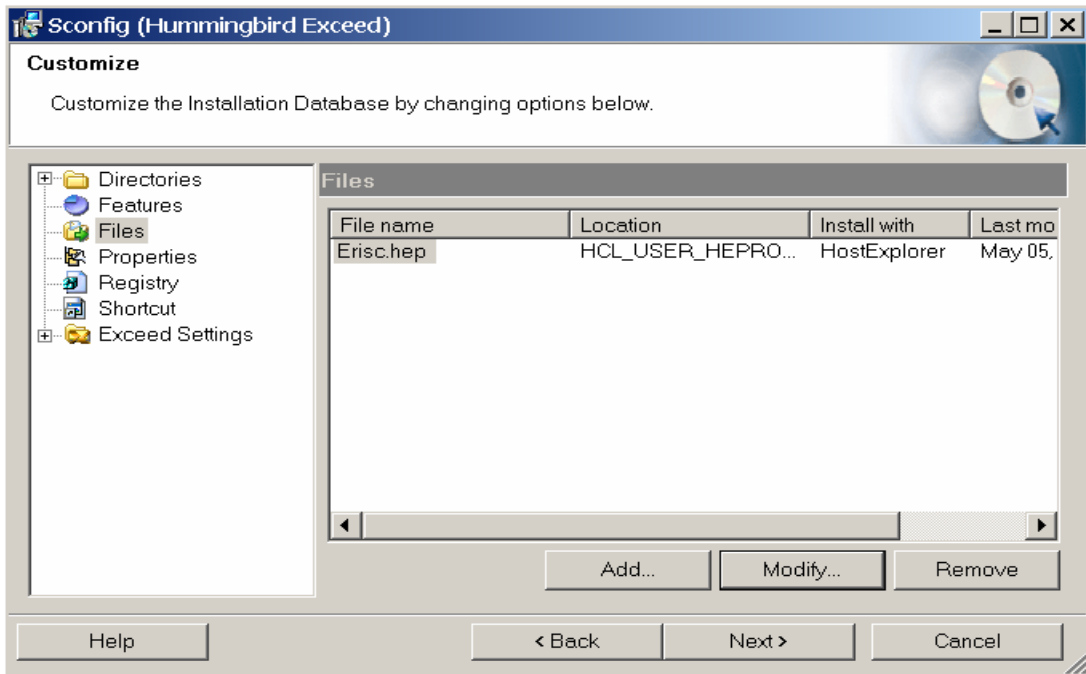
5. Click on “Add”, and browse for the .hep file, in the example below the .hep file was copied into the administrative installation directory from the following path: “C:\Documents and Settings\username\Application Data\Hummingbird\Connectivity\9.00\Profile”.



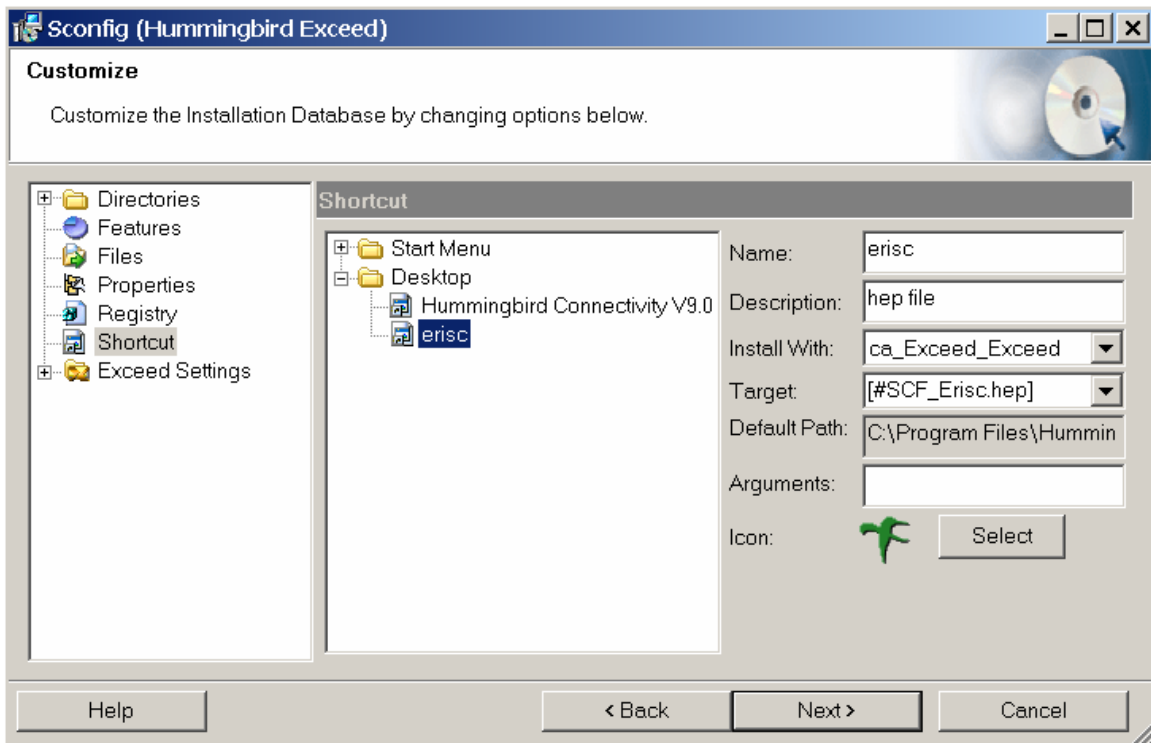
6. Select the file and click on “Open”, you will get an “Add/Modify File” screen as shown below:



7. The “File name” field will be filled up automatically, under the “Choose Destination:” field, select “HCL_USER_HEPROFILE”, then the “Default Destination Path” field gets filled up automatically. Under the “Install with feature” select “HostExplorer”. Click on “OK” and your Sconfig screen should like as follows:

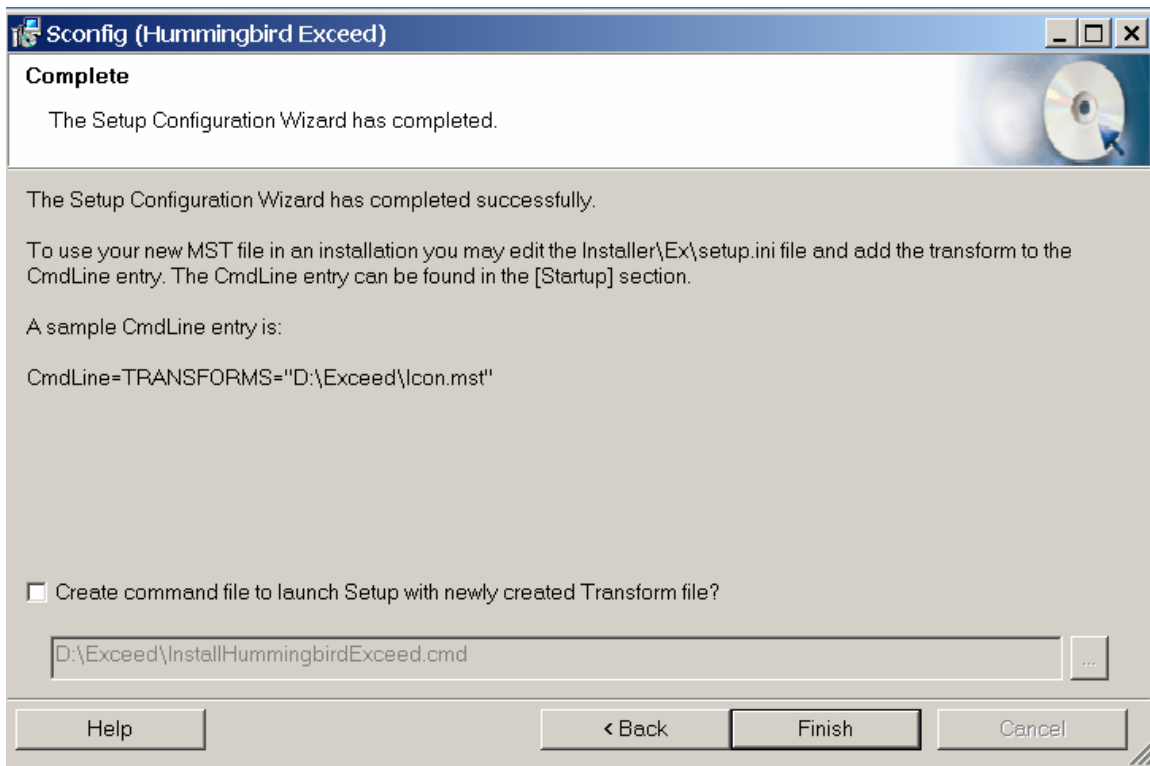


8. If you have more .hep files to add, repeat steps 5 to 7 for every .hep file, the .hep files that you would like to add should be listed in the above screen. If you would like to have a shortcut created for one or more of the .hep files; you need to select the “Shortcut” option from the left side of the screen as shown below:



9. From the above screen, right click on the desktop folder and select “Add Shortcut here” from the pop menu. You then need to fill in the fields on the right hand of the screen as shown above.
 - a. The “Name” field is the name of the icon that the users will be installing on their machine.
 - b. The “Description” field is the description that the users will see when you point to this icon.
 - c. The “Select” button allows you to choose an image of your choice for the icon that will be installed.

10. Click “Next”, you will get a screen informing you that the transform file will be created. Click “Next” on that screen and you will get the final screen indicating that setup configuration wizard has completed successfully, the final screen looks as follows:



11. Click finish and the wizard will end. As mentioned in the above screen, in order for your users to install the customization in this transform file, you need to edit the Installaer\Ex\setup.ini file and add the transform to the CmdLine entry under the [Startup] as follows:

CmdLine=TRANSFORMS="D:\Exceed\Icon.mst"

Where “D:\Exceed\Icon.mst” is the patch to your .mst file

Or you can run the install from a command prompt under the administrative install directory as follows:

```
setup /V"TRANSFORMS=icon.mst"
```